

# wellcare



## AIR PRESSURE EYE CARE MASSAGER

### **USER MANUAL**

**Model Number FE-4611**



# Contents

<b>03</b>	<b>Important Safety Instructions</b>
<b>06</b>	<b>Product Overview</b>
<b>07</b>	<b>Operation</b>
<b>08</b>	<b>Specifications</b>

# Important Safety Instructions

## READ CAREFULLY AND KEEP FOR FUTURE REFERENCE

Read this manual thoroughly before first use, even if you are familiar with this type of product. The safety precautions enclosed herein reduce the risk of fire, electric shock and injury when correctly adhered to. Make sure you understand all instructions and warnings. Keep the manual in a safe place for future reference, along with any warranty information, your purchase receipt and the original packaging carton. If you sell or transfer ownership of this product, pass on these instructions to the new owner of the product.

**Always follow basic safety precautions and accident prevention measures, including the following:**

### Usage conditions and restrictions

- This product is intended for private use by adults only. It is not suitable for commercial or trade use. Do not use it for anything other than its intended purpose, and only use it as described in this manual.
- **CAUTION:** Avoid leaving your device in direct sunlight, near to heat or boiling water.
- Do not use the device if you have swelling, or have had surgery, sunburn or other skin problems.
- Take glasses, false eyelashes and contact lenses off before using.
- Do not share the same device.
- Do not power it on when charging.
- Do not disassemble the device by yourself.
- Do not immerse the device in water.
- This product is not a medical device and should not be used to treat medical conditions
- If at any time you feel discomfort or skin irritation, please immediately stop using the product.
- If you experience any pain or side effects after using the product, please immediately see a doctor.
- This product must only be used indoors

# Important Safety Instructions (Cont.)

## Care, cleaning and storage

- Before cleaning or maintaining, make sure it is disconnected.
- Only clean the housing with a soft, dry or slightly damp cloth. Do not use liquid or aerosol cleaners. Do not use solvent or oil-based vibration ball.
- Do not use chemical, steel wool or abrasive cleaners to clean the outside as these chemicals may damage the silicon head.
- Store the appliance in a cool and dry indoor area, disconnected from the power supply and out of direct sunlight.

## Electrical safety (charging)

- **WARNING:** Only use the supplied USB cable to charge the appliance. Using the wrong charger can cause fire or explosion of the battery.
- **Connection/disconnection:** To connect the battery charger, insert the power plug firmly into an appropriate mains socket. To disconnect, grip the power plug firmly and remove it from the outlet, do not pull on the cord.
- **Do not leave the adaptor plugged in** when the device is fully charged. When unplugging, grab the plug, do not pull the cord. Do not use or charge the product if you notice anything wrong with the battery.
- The battery is not exchangeable
- **Charging:** When charging the appliance, place it on a flat surface, away from hot surfaces and close to a power point so no one trips over the cord. Do not leave the appliance charging or operating unsupervised. Do not attempt to use the device while it is being charged.
- **Protect the USB charging cable:** Do not kink, strain or damage the charging cable and protect it from sharp edges and heat. A damaged charging cable must be replaced by a new one.

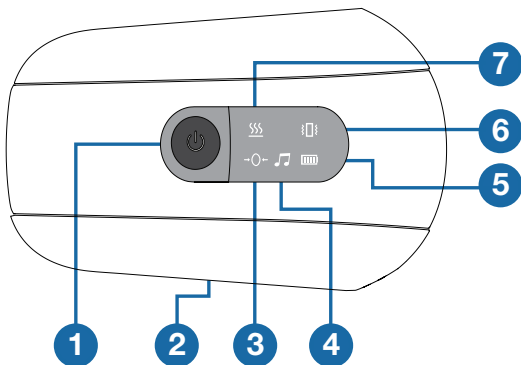
## Important Safety Instructions (Cont.)

- Note: Supervision is necessary if you are using your device around children or infants.
- Do not use on children and keep out of reach of children.
- This device is not suitable for use by persons with reduced physical, sensory or mental capabilities.
- Ensure to adjust the elastic to a suitable tightness to secure the product.
- It is suggested to sit or lie on a chair or sofa during use for maximum comfort.
- Use this device a maximum of once or twice per day, for no longer than 10-20 minutes.
- Do not open your eyes while the device is in use.
- Always charge the device after use.
- Clean the surface of the device with a towel or cotton ball, using 75% medical alcohol.
- Do not place or use the device near a fire, corrosive liquids, or other adverse environments.

It is recommended to consult your doctor before using this device if you:

- Are pregnant
- Are short-sighted over -6.00 dioptres
- Have serious glaucoma or cataracts
- Are under 7 years old
- Have a sequela of apoplexy
- Have an eye injury, or are in the period of rehabilitation from any serious eye surgery.
- Are suffering from serious eye inflammation.

# Product Overview



- 1 Power/Mode button: press and hold to turn on/off. Press to switch modes.
- 2 USB-C charging port: connect the supplied USB-C charging cable and the other to a 5V power adaptor (not included) to charge the device.
- 3 Pressure indicator
- 4 Music indicator
- 5 Battery status indicator: LED will flash and a voice notification will be heard when there is no battery. LED will flash slowly when charging and the LED will light up when fully charged.
- 6 Vibration indicator
- 7 Hot compress indicator

## Charging the device

- Connect the supplied USB-C charging cable to the USB-C charging port on the device, and the other end to a 5V power adaptor (not included).
- When charging, the battery status indicator will flash slowly. The indicator will light up white once fully charged.

## Operation

- Press and hold the Power/Mode button to turn on the device.
- Press the Power/Mode button repeatedly to select between the different modes to best suit your needs. There are 4 modes available.

Mode	Pressure	Hot Compress	Vibration	Internal Music	Time (min)
Vitality	Yes	Yes	Yes	Yes	10
Relaxation	Yes	Yes	No	Yes	15
Soothing	Yes	Yes	No	No	15
Sleep	Yes	No	No	Yes	20

Note: the device will automatically power off when the operation time is finished.

## Troubleshooting

If the device does not work, check and ensure that it is fully charged. If the product is still not working, please call our after sales support centre. Do not attempt to open and repair the product yourself.

# Specifications

Battery	Lithium 3.7V, 1200mAh
Charging voltage and current	DC 5V, 1A
Max. power consumption	5W
Hot compression temperature (C)	42+/-2
Weight	275g (approx.)
Dimensions (W x H x D) (mm)	210 x 75 x 130

For Technical and Warranty Support

1300 886 649

[tempo.org/support](http://tempo.org/support)

Distributed by Tempo (Aust) Pty Ltd,  
PO Box 132, Frenchs Forest NSW 1640

## Compliance

This appliance has been fully tested and meets all requirements as set out by standards AS/NZS 60335.2.32 for electrical safety.



The RCM Mark (Regulatory Compliance Mark) indicates that the product complies with the relevant guidelines of the ACMA as well as corresponding government requirements for the safety of electrical devices.



## Responsible disposal

**WARNING!** This product contains a rechargeable lithium-ion battery. Never throw the appliance into a fire and do not subject it to high temperatures. There is a risk of explosion!

At the end of its working life, do not throw this appliance out with your household rubbish. Electrical and electronic products contain substances that can have a detrimental effect on the environment and human health if disposed of inappropriately.

Cut the power cord of the battery charger and remove the lithium-ion battery pack from the appliance before disposal. Dispose of the appliance and the battery pack responsibly, observing any local regulations regarding the disposal of consumer goods and batteries. Contact your local authorities for advice on battery disposal and recycling facilities for electrical consumer goods.

# Notes

# Notes



### **Warranty returns**

Should you for any reason need to return this product for a warranty claim, make sure to include all accessories with the product.

### **Product does not work?**

If you encounter problems with this product, or if it fails to perform to your expectations, make sure to contact our After Sales Support Centre on (AU) 1300 886 649 or (NZ) 0800 836 761 for advice.

Distributed by Tempo (Aust) Pty Ltd ABN 70 106 100 252

PO BOX 132 Frenchs Forest, Australia NSW 1640

Customer Helpline:

(AU) 1300 886 649 (NZ) 0800 836 761

Email: [tempo.org/support](mailto:tempo.org/support)