

wellcare



Mini Cosmetic Fridge

User Manual

Model Number RE1000A-SA



Contents

- 03 Important Safety Instructions**
- 06 Product Overview**
- 07 Operation**
- 09 Specifications**

Important Safety Instructions

READ CAREFULLY AND KEEP FOR FUTURE REFERENCE

- Read all instructions before use and retain this user manual for future reference.
- Read all following safety precautions carefully before use.
- The appliance is not to be used by persons (including children) with reduced physical, sensory or mental capabilities, or lack of experience and knowledge, unless they have been given supervision or instruction.
- Children should be always supervised and not allowed to play with this product.
- This product is not suitable for camping use.
- Do not expose this product to rain.
- DO NOT store dangerous items in the appliance, such as spray cans, explosives, and flammable liquids / propellants.
- This appliance is intended to be used in household and similar applications such as:
 - **WARNING:** When positioning the appliance, ensure the power
 - Staff kitchen areas in shops, offices and other working environments
 - Farmhouses and by clients in hotels, motels and other residential type environments
 - Bed and breakfast type environments
 - Catering and similar non-retail applications

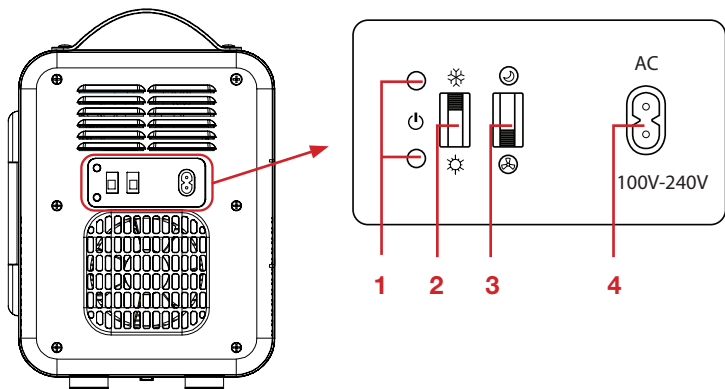
- **WARNING:** Do not place portable power outlets or portable power supplies at the rear of the appliance.
- If the power cord shows any sign of damage, cease use immediately and contact our After Sales Support.
- This product should be cleaned regularly if there are signs of residual water inside it.
- Unplug the power cord before cleaning. Wipe the dust from the surface using a slightly damp cloth. Ensure any water does not come in contact with any internal parts or connectors.
- Do not clean using any harsh detergents or solvents.
- Before using this product, ensure to only use a power supply that matches the rating as outlined in the specifications.
- This product should not be used for transporting acidic or corrosive items.
- Do not block the ventilation openings during operation.
- The product requires good ventilation, especially around the vents, allow a gap of at least 100mm around all vents.
- Do not use this product in any way other than what is outlined in this user guide.
- Do not disassemble or modify this product in any way.
- When using the heating function, the inside of this product can reach a temperature of approximately 65°C. Caution should be used to avoid contact burns.
- Temperatures above 32°C may see a slight performance drop.

- Before switching between heating and cooling modes, turn the fridge off and allow to rest for 15 minutes before turning back on.
- Always store this product in a clean, dry and well-ventilated environment.
- Do not fill the product with ice, water or other liquids.
- Do not place any electrical devices inside the appliances as they may be damaged.
- Do not expose this product to any open flames and other sources of heat.
- Do not allow a large amount of frost to build up on the inside walls as this may impair cooling.
- Designed for short term warming and cooling.
- Defrost by tuning the product off, allowing the frost to melt and wipe out the water.
- This product cannot be use as a freezer and isn't suitable for the freezing of fresh meats and produce.
- This product is not designed for temperature control of medicine.



This product is a class II or double insulated electrical appliance. It has been designed in such a way that it does not require connection to electrical earth.

Product Overview



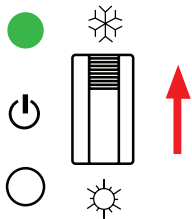
Rear view

1. LED indicators
2. Cooling/Heating switch - slide the switch up/down to change between cooling and heating mode.
3. Mode switch - slide the switch up/down to change between silent and normal mode.
4. AC power socket - connect the supplied AC power cord to the socket and the other end to a wall outlet to power the product.

Operation

Connect to power:

- Connect the supplied AC power cord to the AC socket on the rear of the product and the other end to a wall outlet to power the product. Turn the cooling/off/heating switch to select the temperature mode as below.

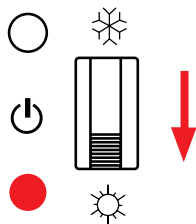


Temperature mode (cooling):

- Slide the cooling/off/heating switch up. The LED indicator will light up green indicating the fridge is now on cooling mode.

Temperature mode (heating):

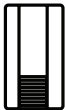
- Slide the cooling/off/heating switch down. The LED indicator will light up red indicating the fridge is now on heating mode.



- Slide the cooling/heating switch to the middle to turn the fridge off.



To avoid damaging the fridge, when switching between the heating and cooling modes, place the cooling/heating switch to the middle for 15 minutes to allow the fridge to reset.



Fan mode (normal):

- Slide the mode switch down. The fan will operate at optimal speed (recommended during the day).



Fan mode (silent):

- Slide the mode switch up. The fan will operate at a slower speed (recommended during the night).

Specifications

Input Voltage	AC 100-240V, 50/60Hz
Power Consumption	48W
Climatic Class	T
Cooling Type	Semiconductor
Heating	Up to 65°C (when running continuously for 2 hours)
Cooling	Between 8°C - 18°C lower below ambient temperature (when running continuously for 2 hours)
Capacity (L)	4L
Weight	2.6 kg
Dimensions (mm)	265 x 208 x 265

For Technical and Warranty Support

1300 886 649

tempo.org/support

Distributed by Tempo (Aust) Pty Ltd,
PO Box 132, Frenchs Forest NSW 1640

Compliance

This appliance has been fully tested and meets all requirements as set out by standards AS/NZS 60335.2.24 for electrical safety.



The RCM Mark (Regulatory Compliance Mark) indicates that the product complies with the relevant guidelines of the ACMA as well as corresponding government requirements for the safety of electrical devices.

Notes

Notes



Warranty returns

Should you for any reason need to return this product for a warranty claim, make sure to include all accessories with the product.

Product does not work?

If you encounter problems with this product, or if it fails to perform to your expectations, make sure to contact our After Sales Support Centre on (AU) 1300 886 649 or (NZ) 0800 836 761 for advice.

Distributed by Tempo (Aust) Pty Ltd

ABN 70 106 100 252

PO BOX 132 Frenchs Forest NSW 1640

Customer Helpline:

(AU) 1300 886 649 (NZ) 0800 836 761

Email: tempo.org/support